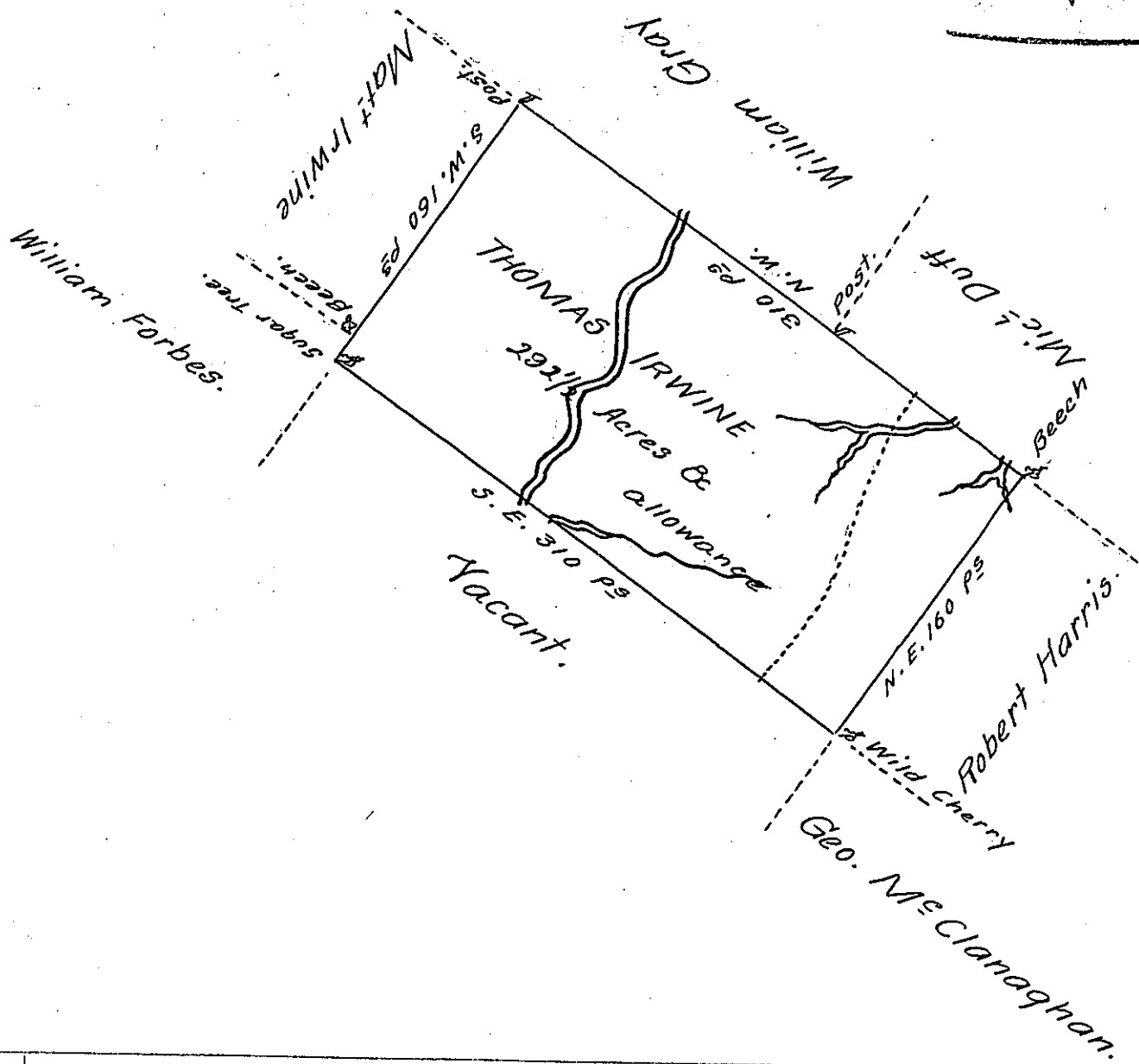


Lower part of page



A Draught of a Tract of Land Called — Situate on some small Branches of Tunkhannock Creek adjoining lands survey'd for William Gray in Northumberland County containing Two hundred and Ninety Two Acres and  $\frac{1}{2}$  an Acre besides the Usual allowance of 6 Per Cent for Roads &c<sup>e</sup> Survey'd for Thomas E Irwine the 8<sup>th</sup> day of May 1775 in pursuance of a Warrant dated the 20<sup>th</sup> day of Feb<sup>y</sup> 1775.

Chas<sup>s</sup> Stewart Dep<sup>y</sup> Suror

To John Lukens Esq<sup>r</sup>  
Surv<sup>r</sup>. Gen<sup>l</sup>.

IN TESTIMONY that the above is a copy of the original remaining on file in the Department of Internal Affairs of Pennsylvania, made conformably to an Act of Assembly approved the 16th day of February, 1833, I have hereunto set my Hand and caused the Seal of said Department to be affixed at Harrisburg, this Eighteenth day of November 1905.

*Loane B. Brown*  
Secretary of Internal Affairs.